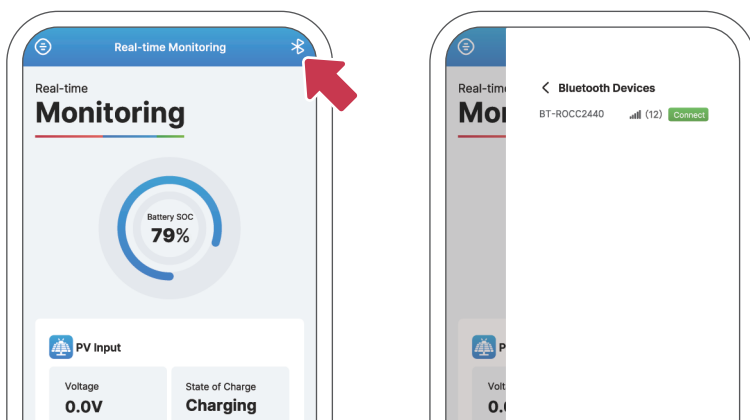


APP OPERATION

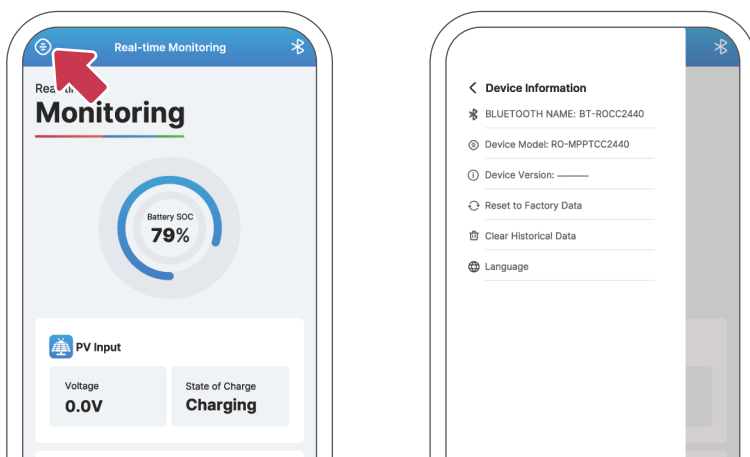
Bluetooth Connection

Step 1 Turn on your phone's Bluetooth.

Step 2 Tap the Bluetooth icon on the upper right corner of the interface and connect Bluetooth with the device named "BT-ROCC2440"

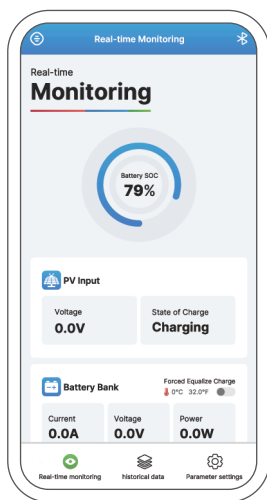
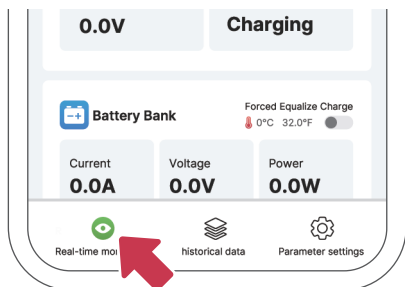


Step 3 Check the upper left icon on Device Information.



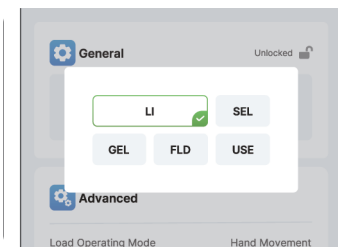
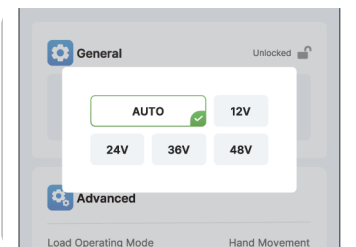
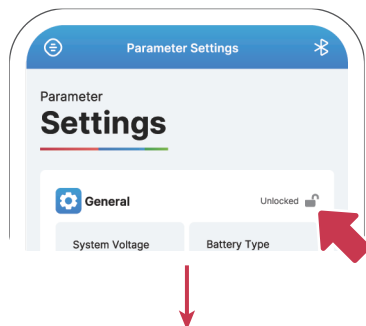
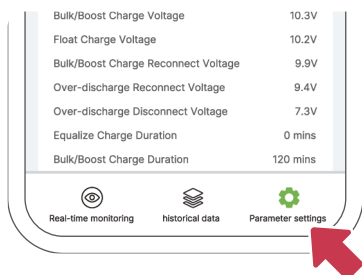
Step
4

Check whether all parameters in "Real-Time Monitoring" are displayed.



Parameter Settings

Enter the "Parameter Settings" and unlock the settings. Set the battery type and system voltage and tap confirm to save the setting.



If you have any questions or need any help with parameter settings or information reading, please contact us at service@redodopower.com.